

Glastonbury Road, Birmingham, B14 4DS

£210,000

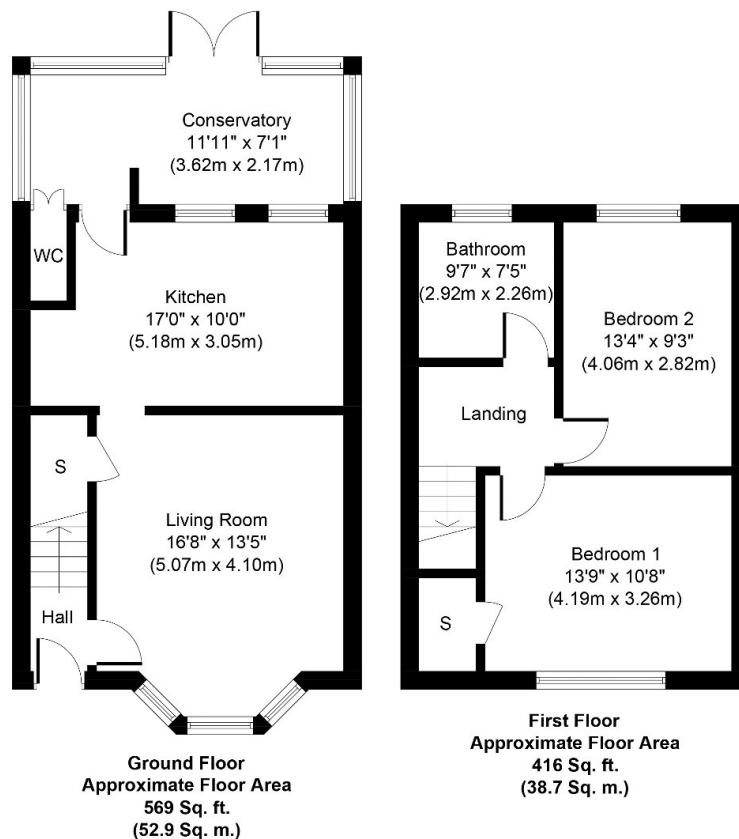
2 1 1



BLACK AND GOLDS ESTATE AGENTS are pleased to present for sale this two bedroom end terrace property on Glastonbury Road, B14 which is available with NO UPWARD CHAIN. Viewing highly recommended!

Key Features

- Two Bedroom End Terrace
- Driveway - Off Road Parking
- Double Glazing
- Conservatory
- Double Bedrooms
- Gas Central Heating
- No Upward Chain
- Rear Garden



Whilst every attempt has been made to ensure the accuracy of the floor plan contained here, measurements of doors, windows, rooms and any other items are approximate and no responsibility is taken for any error, omission, or mis-statement. The measurements should not be relied upon for valuation, transaction and/or funding purposes. This plan is for illustrative purposes only and should be used as such by any prospective purchaser or tenant. The services, systems and appliances shown have not been tested and no guarantee as to their operability or efficiency can be given.

Copyright V360 Ltd 2023 | www.houseviz.com